



Roots and Shoots



Annual Review 2008

Training young people to fulfil
their potential
Environmental Education for All



The Learning Centre at Roots and Shoots seen from Fitzalan St. The building has a large photovoltaic roof, solar water heating, three planted roofs and a rubble roof,

Roots and Shoots is a small, independent charity dedicated to:

- * providing vocational training for young people with particular needs (in horticulture, retail skills and life skills);
- * providing high quality environmental education to schools and the wider community using the Wildlife Garden and the neighbouring land;
- * maintaining our site for its aesthetic quality and biodiversity value;
- * providing quality indoor spaces for hire by community groups and environmentally-minded organisations.



Melanie Fanstone, Chair of Trustees:

Welcome to Roots and Shoots and the 2008 Annual Review. We have had another busy and successful year. Twenty trainees have completed their time with us and another 23 started. There have been some great community events - local children and their families were enthralled by the falconry display for our summer opening and a wonderful, sunny Apple Day was very well attended and as fun as ever.

As we look to the coming year we are concentrating on making R & S available to as many young people as we possibly can, both trainees and school pupil visitors. We'd like to do more for 14-16 year old students for whom experience at Roots and Shoots can be a valuable addition to life at school. Knowledge about the environment and our effect on it has never been more important - especially perhaps for young people in the inner city. We are also, in the time of the credit crunch, working to make the most of our wonderful building and to ensure the future security of Roots and Shoots.



Who we are, what we do...



Welcome to Roots and Shoots

Training at Roots and Shoots aims to develop the aptitudes and skills that young people from the inner city need to enable them to lead productive and fulfilling lives.



Vocational training

For the Entry to Employment (E2E) provision in 2007 - 2008, trainees enrolled on the Horticulture course completed the coursework and assessments and gained City and Guilds Horticulture NVQ Level 1. They worked on- and off-site including at the scheme's allotments and on work placements. The trainees enrolled on the Retail Skills course also completed coursework and successfully passed assessments. They worked in the shop (below right), helped to produce our Apple Juice (next page) and worked as stewards for our public events. They were also assessed on placements. All the trainees achieved a City and Guilds Maths and English qualification ranging from Entry Level 2 up to Level 1. A further qualification that was part of the scheme was the City and Guilds Employability and Personal Development Level 1. This covered aspects of self-development needed to support the young person in further education and the workplace.



For the trainees starting in autumn 2008 the E2E provision has so far involved several workshops including floristry (top right), poetry, video film making, mosaic and photography. A longer-running programme of bicycle maintenance, care and use has been run by Ola Lawal, founder and lead instructor of Real Wheel Cycle Training Academy (right). His tailored, weekly programme for our trainees consists of two classroom sessions (safety and use of tools), practical safety checks, routine adjustment and repair and riding skills. At the end of the programme the trainees get to keep the bikes they have been working on. Like all workshops at Roots and Shoots the final aim is to improve employability by developing key life skills. A course of drama workshops will run in 2009 to build confidence and develop interview skills as well as having fun.

Connexions works closely with our young people and there is regular support throughout the 40 weeks course. Individual personal advice is available and Connexions support the 'moving on' process at the end to ensure a smooth transition to further training or into the workplace. In 2009 we will be expanding the horticultural provision through our work at Myatts Fields. We will also be delivering the new Foundation Diplomas.



The trainee's year is further diversified with visits to, for example, RBG Kew, the RHS Garden at Wisley, ice skating, visits to shows and other horticulture retail centres.



from orchard

"Orchard Bounty Roots and Shoots"



Each year since 2004 we have pressed apples into juice to be sold as "Orchard Bounty Roots and Shoots". This is entirely down to the generosity of friends David and Gayle Whittingham, pictured in their orchard in the Usk Valley in Wales. After filming them pressing their juice in Wales in 2003 they donated all the equipment to us so that we could run it as a small business experience for the trainees. Pictured here are staff, trainees and volunteers from different years involved with every stage of the process - from orchard to customer.



to bottle

to satisfied customer!



Open days for local communities to see and share our work have always been a feature of the life of Roots and Shoots. They have expanded since 1999 with dates such as Apple Day in October, National Science Week in March, open garden events for the National Gardens Scheme in June and Christmas Fairs. Since the opening of the Learning Centre in autumn 2006 these have been accompanied by regular Producers' and Maker's stalls helping to diversify a Roots and Shoots Open Day.



Apple Day, Fairs and other events



Apple Day is probably our most popular event. Most years we display up to 100 varieties of apple from around the world. In the week before, trainees visit the national collections at Brogdale near Faversham in Kent, returning with the precious cargo. The displays feature exhibits on the evolution and history of apples, there are apple games, a 'traditional' visit by the Lions part theatre with their giant Corn Queene and Corn Dollies, and sales of our juice. In June we also had Ian and his juggling and a fantastic display by Countrywide Falconry. Solarcentury, installers of our solar roof, gave workshops on three of our open days and there is always storytelling and art.





The Wildlife Garden with its range of habitats and diverse flora is of great interest to gardeners, urban naturalists and a very large number of invertebrates. The summer flower meadow (above) is cut once a year by hand with a scythe and sickle - it attracts large numbers of foraging insects including many hundreds of bumblebees and large populations of three grasshopper species and two unusual crickets (including Roesel's Bush Cricket, bottom right, young and adult female). There are breeding populations of common blue, small skipper (top centre) and holly blue butterflies. The flower borders and the many nesting habitats created in the garden attract over 20 species of bee such as the fulvous mining bee and wool carder bee (top centre/right). Each year we are visited by a rarity or two - this year it was a mining bee, *Andrena pilipes*, classified as 'nationally scarce' (above and centre, on the beautiful rose "Fantin Latour").



Biodiversity and habitat creation at Roots and Shoots



Parasites and predators are also a large part of our fauna with interesting spiders (e.g a male crab spider, above), spider hunting wasps turning the tables on spiders (top, far right with her prey for her nest) and unusual digger wasps (below left).



Experimental work on diversifying the habitats of our planted and rubble roofs for invertebrates is progressing with the help of Gyongyver Kadas and Dusty Gedge (www.livingroofs.org).



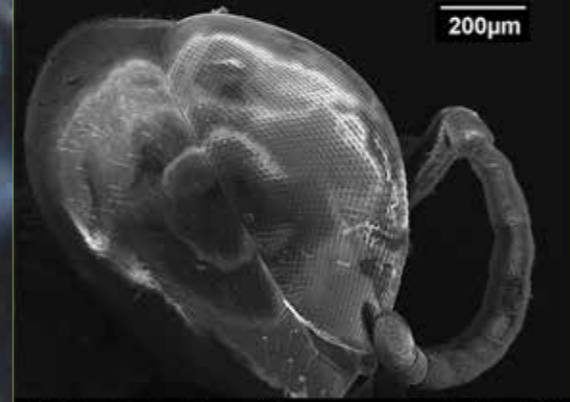
The 'Water Walk' - sampling ponds and the Thames



using the school microscopes



making poetry and models from our observations



the head of a tiny solitary wasp under the SEM



Science Week Open Day: using a Scanning Electron Microscope, exhibition of work by years 2 and 4.



Environmental Education



Photo: Dulwich Wood Nursery School

The Wildlife Garden at Roots and Shoots has always 'worked hard for its living'.

The garden was first established in 1985 but has only fully blossomed as a 'wild community' resource since 1999. Each year it is visited by up to 2000 school children on curriculum study visits with an increasing number of adult visitors in recent years. In addition there are special programmes and events for National Science Week, moth nights, projects with a cross arts/science theme and courses for established and new beekeepers (below right, a bee disease workshop). This year the Science Week project was "Lambeth's Living Waters" (left), a classic partnership project with Walnut Tree Walk School, Prof. Jane Lewis of the University of Westminster (helping with microscope workshops in our study room and in the school), funding from the Royal Society to provide a class set of microscopes and Chris Walker, of JEOL (UK) Ltd., who organised a Scanning Electron Microscope for our Open Day: a unique opportunity for visitors to learn about the use of SEMs and actually to 'have a go!' As always, our essential artist partners, Reen Pilkington and Martha Macdonald provided essential organisational and creative skills.



Microscope workshops in our Wildlife Garden Study Room - water can be magnified up to 2000 times



The hall in the Learning Centre provides attractive accommodation for meetings, away days, conferences and other training courses. There are also two smaller rooms in the old stable adjacent to the hall. These can be combined as 'break out' rooms. The barn and the Wildlife Garden Study room are further spaces available when not in use for our own activities.



Staff, Trustees, Volunteers, Friends

Hall and meeting room events

Our rates are very competitive and the beautiful surroundings of gardens and urban wildlife being used for learning by local communities, make our site very attractive and perhaps unique in Central London for holding events. We have 'commercial' and 'community' rates for hiring the spaces and can also provide refreshments and hot lunches, freshly cooked - and much appreciated - on the premises by chef Phillip Costen. The garden provides a remarkably wild and refreshing break from indoor deliberations. We now have a regular client base including Natural England (who held their 'Natural London' photography competition exhibition here this year), the Environment Agency, the Green Register, WaterAid, The Big Lottery, CIRIA workshops on living roofs and many local community groups.

All our visiting groups have some connection with the environment, community or educational work: for example, a Waste Watch training day for schools on campaigning for recycling (right). A new event for Roots and for Lambeth this year was the 'Blake in Lambeth Festival' with performances by the Blake Congregation and an exhibition of the *William Blake Birthday Book*. In the Garden 'William Blake's Paradise Corner' was restored.



Charities like Roots and Shoots need committed and flexible staff. In 2007 - 2008 our staff comprised: *Linda Phillips*, Manager; *David Perkins*, Wildlife Garden, Environmental Education, events, web-site; *Ian Carruthers*, Employment Liaison Officer, trainee welfare and recruitment; *Ruth Mitchell*, Trainee Education Coordinator; *Yvonne Najair-Bellinfante*, Retail Skills Trainer; *Ruth Yeo* and *Amanda Rew*, Horticulture Trainers; *Elsa Cole* and *Jo Kenyon*, Administration and hall hire; *David Sawyer*, Volunteer Accountant; *Carlene Johnson*, Catering Assistant; *Phillip Costen*, Chef; *Donnette Robinson*, Cleaner; *Arfa Shah*, catering/shop. We were also joined by *Colette Ozanne*, temp. admin.; *Fiona Finn*, temp. Horticulture Trainer; *Riccardo Hylton*, temp. Employment Liaison Officer.

Small charities also need committed trustees. For 2008 these have been: *Melanie Fanstone*, Chair; *Boz Borowy*, Treasurer; *David Lowick*, *Aster Crawshaw*, *Kate Lye*, *Glenda King*, *David Sawyer*, *Derek Nolan*, *Graham Cocking*, *Michelle Farmer*. Many thanks to *Kate Hoey* MP (top), our patron and key supporter in times of need.

We depend for many of our activities on voluntary help and support from local communities. We are particularly grateful to: *Georgina Gough*, for administering the Friends of Roots and Shoots; *Peggy* for all her work on the Fairs; *Brenda* and *Linda*, trusted plant propagators; *Philip* and *Liz Moore*; *Lindsay Swan*, for promotion and publicity (also for the distribution of garden tools refurbished by prisoners from HMP Wandsworth (top)); *Barry*, a very handy man; *Rachel*, *Nathan*, *Paul* and *Garry*; *David* and *Gayle Whittingham*, always there with apples; *Amanda Guo*, City of London Academy; artists *Reen Pilkington* and *Martha Macdonald*; *Gyongyver Kadas* and *Aude de Liedekerke* on the roof with *Dusty Gedge*; *Val Stapleton*, LSC; *Catey Hillier*; *Professor Jane Lewis* and *Dr. Linda Percy*, University of Westminster; *Chris Walker* & *Mohamed* of JEOL (UK) Ltd.; *Sam Harris*, Science Coordinator, *Walnut Tree Walk Primary* (and children); staff at *Fusion Gym*; *Michael Beckford* & *John Lister* (Connexions); *Sylvia* from *Sparkworks Mosaics*; *Monica* & team, *Insight Video*; *Ola Lawal*; *Sonia Ritter* of *the Lions part*, on *Apple Day* and for a hobby horse workshop day (above, *Ruth Morgan*, old friend, at work); *Mary Jo*.



"If you are ever presented with the opportunity to visit a place called Roots and Shoots - grab it! And if you are asked to do some voluntary work there, even better. The place will gladden your heart and renew your faith in human nature - in fact in humans and nature (if need be). That's pretty much the sentiment of a team of fourteen Commons staff who spent a day there in September."



This quotation from 'Around the Commons', Parliament's staff magazine, is heartening to recall when the week goes not so well - we seem to be doing something right! The group referred to came as one of our regular working parties, the organisation of which has, since last spring, been facilitated by Ian Carruthers. Ian was a key member of staff who has now moved on to work for Community Service Volunteers. His contribution to Roots and Shoots over the last six years has been varied and invaluable. The year has seen other changes in staff with Ruth Yeo, horticulture trainer, finishing her Diploma in Therapeutic Horticulture and moving to work for Thrive at Battersea Park. - we will be sending her some trainees on work placement. Jo Kenyon also left after her second child was born and is making a new life in Malaga, Spain. We wish both of them well in their future. Amanda Rew has changed her role at Roots and Shoots and now works part-time with 14 to 16 year old secondary pupils using Roots as a base for their gardening experience.

The 2007/2008 cohort of trainees did very well with 80% progressing on to further education and employment. This reflects the effectiveness of the 40-week Entry to Employment course and the considerable work and support from the Roots and Shoots staff, changing our trainees' outlook and attitude to learning. At the end of their course in July we had a meal together in the barn and it was apparent how this diverse range of young people had matured. As with most funding streams there is frequent change and with the demise of the Learning and Skills Council we need to plan and develop a strategy to implement the new Foundation Learning Tier which will be replacing the E2E programme.



It has also been a very busy year for the environmental education and events programme. In order to build upon the success and reputation of this work, to ensure its future and to make the most of the generated potential, we need to capacity-build in terms of both staffing and funding resources. Further work on the Wildlife Garden Study Centre and the installation of the cedar shingle roof donated by HRH Prince Charles (requiring a new roof structure and timber frame) will also need fund raising effort.



The year saw the final completion of the snagging list for the new Learning Centre for which we have also now developed a sound client base in hall and meeting room hire. This brings in essential revenue to support our activities and the building overheads. 2009 will be a challenging year, but one with opportunities for further development in the staffing, management and, above all, the quality and innovative range of the services that Roots and Shoots offers.

Linda Phillips, Founder Manager

**Roots and Shoots
Balance sheet at 31 March 2008 (Draft)**

	Notes	£	2008 £	2007 £
Fixed assets	9		1,036,573	1,161,314
Current assets				
Debtors	10	22,981		20,968
Cash at bank and in hand		191,593		194,112
			<u>214,574</u>	<u>215,080</u>
Creditors: Amounts falling due within one year	11	(58,993)		(77,911)
Net current assets			<u>155,581</u>	<u>137,169</u>
Net assets			<u>1,192,154</u>	<u>1,298,483</u>
Represented by:				
Unrestricted funds			123,781	106,512
Designated funds	12		70,000	70,000
Restricted funds	13		998,373	1,121,971
	14		<u>1,192,154</u>	<u>1,298,483</u>





**Roots
and Shoots**
Walnut Tree Walk
Lambeth SE11 6DN

admin@rootsandshoots.org.uk www.rootsandshoots.org.uk tel. 020 7587 1131
The garden is open during the week for most of the year. For further information see web-site or contact administration.
Roots and Shoots is a company limited by guarantee, reg. in England and Wales, no. 3400781, Charity no. 1064070/0

Roots and Shoots

provides vocational training for young people from the inner city, mainly from the boroughs of Lambeth and Southwark. We aim to give them the skills and self-confidence that will equip them for work. Alongside this training we involve local schools and the wider community by maintaining our site as an important green space and environmental resource. We value people. We encourage staff, trainees, volunteers and all others involved with us to work together, enabling us all to fulfil our potential.

Roots and Shoots

funding comes from a variety of sources. We would particularly like to acknowledge the Learning and Skills Council, the Big Lottery Fund, the Sheepdrove Trust and the London Brough of Lambeth. We are also very grateful for additional funding from the Emerton Christy Charity and a very generous private benefactor.

		<p>Supported by</p>	
--	--	---------------------	------